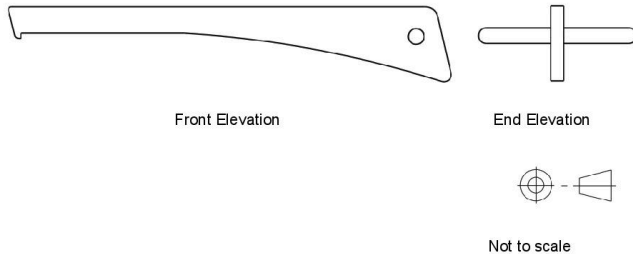


# Orthographic Drawing Questions

- 4 (a) Complete the drawing in **Figure 7** below to an appropriate standard by carrying out the following tasks:
- construct a plan from the existing elevations (3 marks)
  - add one accurate dimension (3 marks)
  - use one additional drawing convention. (1 mark)

Figure 7 High Carbon Steel Maintenance Tool

Plan

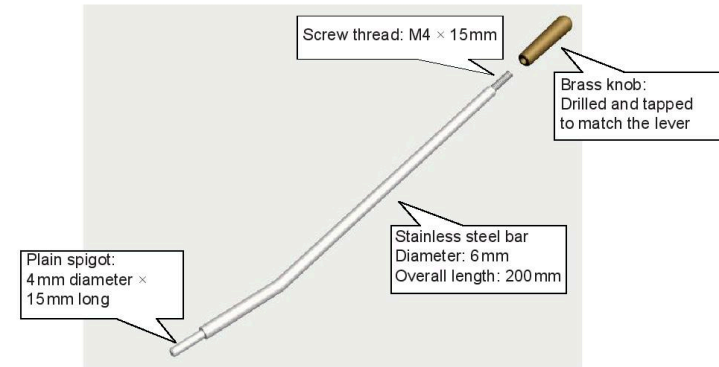


## Answers

| Question | Part | Sub Part | Marking Guidance  | Mark | Comments   |
|----------|------|----------|---|------|--|
| 4        | a    | i        | <ul style="list-style-type: none"> <li>• Use of Projection lines (1 mark)</li> <li>• Use of Rabbat line (1 mark)</li> <li>• Producing a plan view (1 mark)</li> <li>• Plan view drawn in the correct position (1 mark)</li> </ul> | 3    | (max 3)  |
| 4        | a    | ii       | <ul style="list-style-type: none"> <li>• Insert one dimension (1 mark)</li> <li>• Use of appropriate dimension standards (2 marks)</li> </ul>   | 3    | Dimension standards such as leader lines, arrow heads, dimension written above the line, diameter symbol |
| 4        | a    | iii      | <ul style="list-style-type: none"> <li>• Add hidden detail to denote the hook and where the handle penetrates the tool in the plan. (1 mark)</li> </ul>   | 1    | Such as tolerances, centre lines, diameter symbol.   |

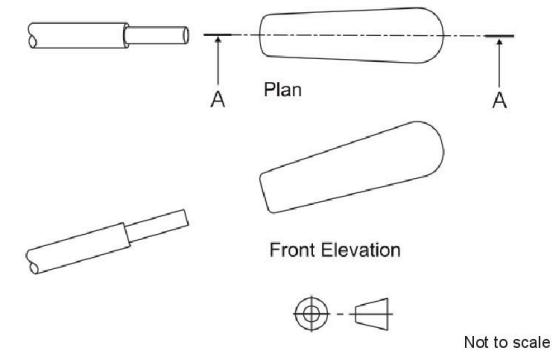
- 4 Figure 3 below shows the parts of a stainless steel tremolo lever for an electric guitar.

Figure 3



- 4 (a) Use the information supplied in **Figures 3 and 4** to complete the Front Elevation in **Figure 4** to an appropriate standard by carrying out the following tasks.
- 4 (a) (i) Complete the front elevation as a sectioned view of the brass knob shown on AA. (4 marks)
- 4 (a) (ii) Add one accurate linear dimension. (2 marks)

Figure 4



- 4 (a) Use the information supplied in figures 3 and 4 to complete the Front elevation in figure 4 to an appropriate standard.

- 4 (a) (i) Complete the front elevation as a sectioned view of the brass knob shown on AA.

- Show cross hatching (1)
- Leave hole area un-hatched (1)
- Screw thread convention (1)
- Show centre-line (1)

4 marks

- 4 (a) (ii) add one accurate linear dimension;

- Dimension correct [can only be 15 mm or 4 mm] (1)
- Correct use of dimension standards (1)

2 marks